

RS PRECISION



THE COMPLETE INSPECTION & REVERSE ENGINEERING SOLUTIONS



1. FARO ARM
2. ROMER ARM

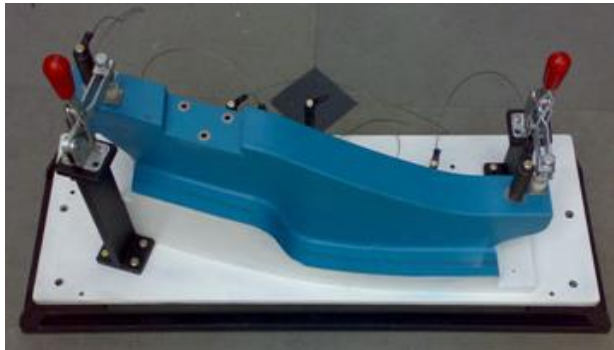
CARL ZEISS
(BLUE LIGHT 3D
SCANNER)

TRACKSCAN
P-542

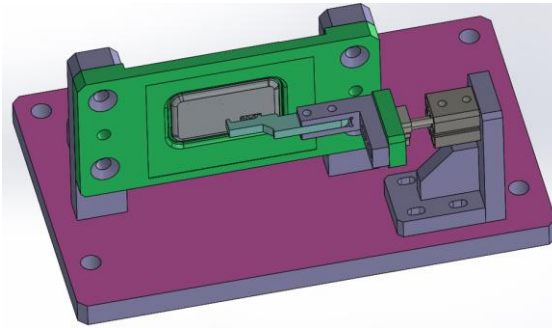
3D PRINTING

- **Plant Address:- PLOT NO. 367, SECTOR-8 IMT MANESAR, GURGAON - 122050 HARYANA (INDIA)**
- **E-MAIL :-rspcmm@gmail.com**
- **RAMESH KUMAR - +91-9582188070,**

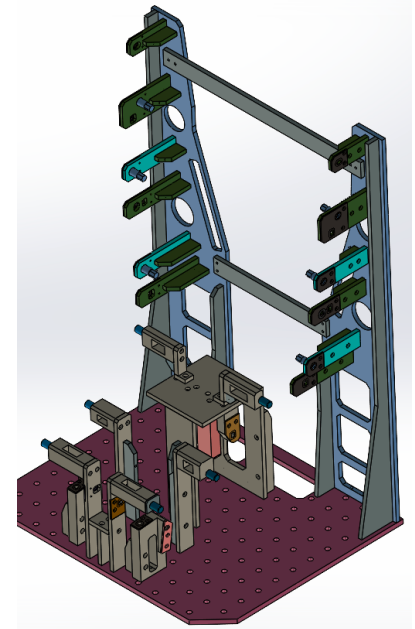
MANUFACTURING



PANEL CHECKER



JIG & FIXTURES



GAUGE



CMM MACHINE ON SITE OFF SITE INSPECTION SERVICES

MAKE :- HEXAGON METROLOGY

ROMER ABSOLUTEARM

1.

Measuring Range :-2.5 m/8.2ft.

List Count :-0.001MM

Repeatability :-0.038 MM

2.

Measuring Range :-3.5 m/11 .5ft.

List Count :-0.001 MM

Repeatability :-0.070MM





CMM MACHINE ON SITE OFF SITE INSPECTION SERVICES

MAKE :- Faro

FARO ARM Quantum S

1.

Measuring Range :-3.5 m/12ft.

List Count :-0.001MM

Repeatability :-0.055 MM



TRACKSCAN P-542

WE CAN MASSURE LARGE-SCALE OBLECT
WITHOUT COMPROMISING ACCURACY



SCANNER



MAKE :- CARL ZEISS



MODEL - COMET 3D 8M

- The ultra-compact 3D sensor ZEISS COMET offers great flexibility, a high measuring speed, and impressive performance.

Quality control / inspection

- ✓ Tool and model making
- ✓ Design
- ✓ Rapid manufacturing
- ✓ Reverse engineering

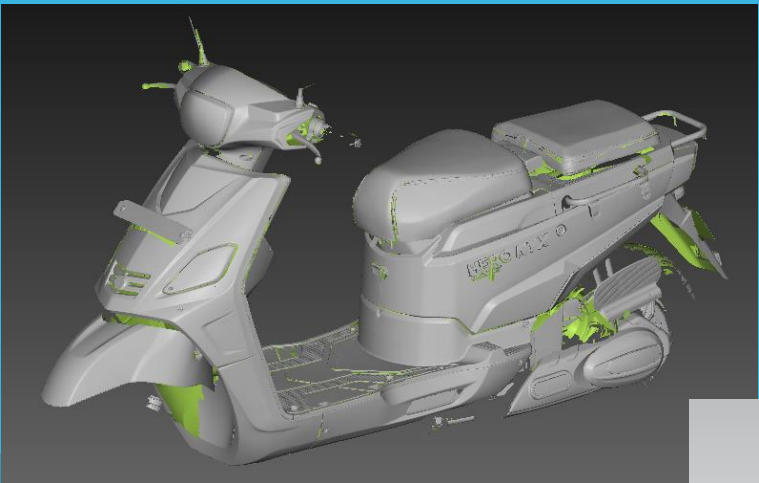




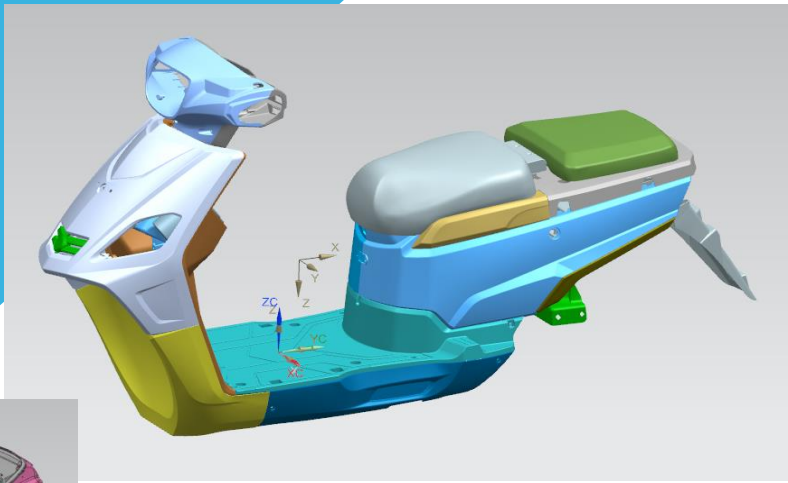
3D SCANNING CAPABILITIES

- ❖ *Blue light scanner for Precise 3D scanning. 01 Nos.*
- ❖ *Red Laser Scanner for medium size objects. 01 Nos.*
- ❖ *3D Scanning of parts.*
- ❖ *3D Scanning at site.*
- ❖ *Provide scanning data in STL format.*
- ❖ *Inspection & comparison with 3D model.*
- ❖ *Convert scanning data to 3D model.*
- ❖ *Cad to part comparison.*

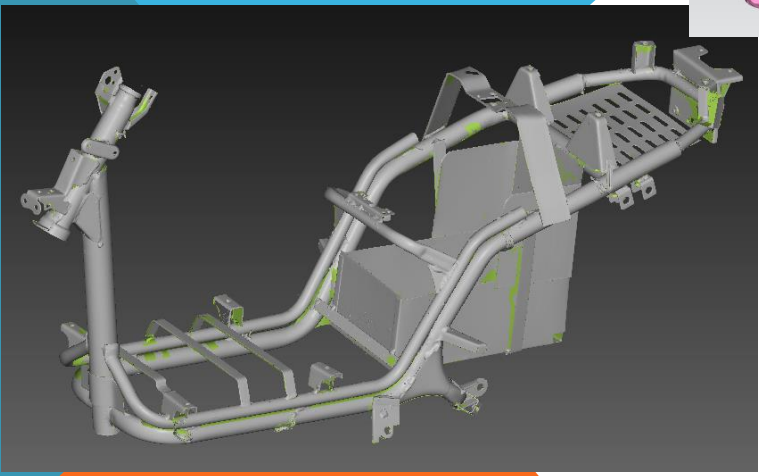
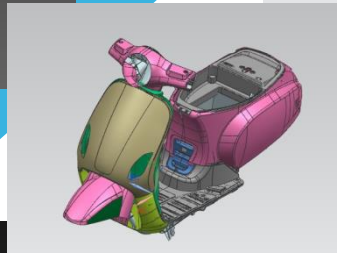
SCANNING & MODELLING CAPABILITIES(ELECTRIC SCOOTY)



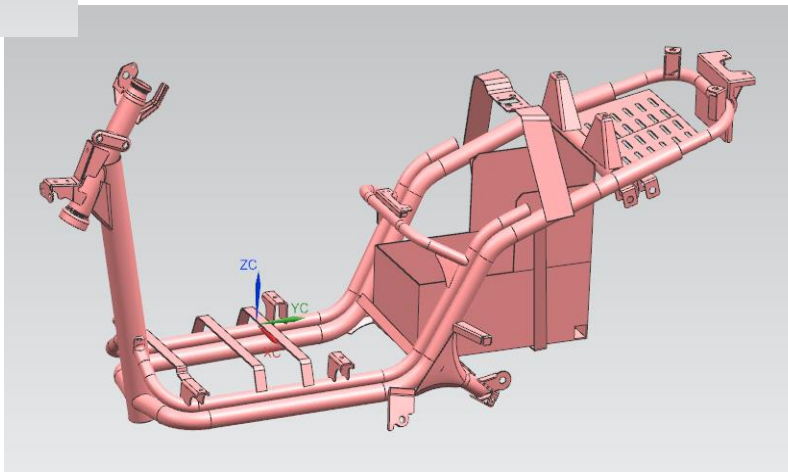
Scooty Scan Data



Scooty Cad Data

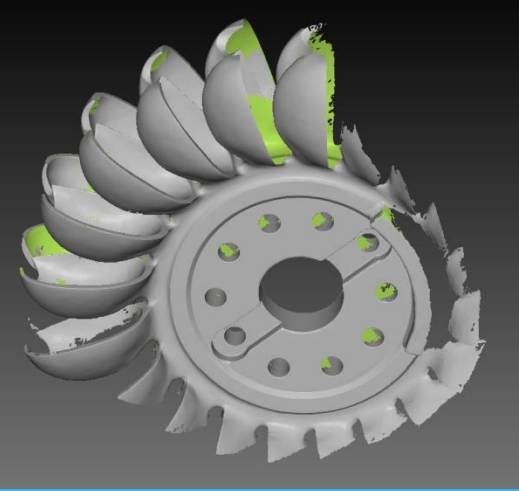


Frame Scan Data

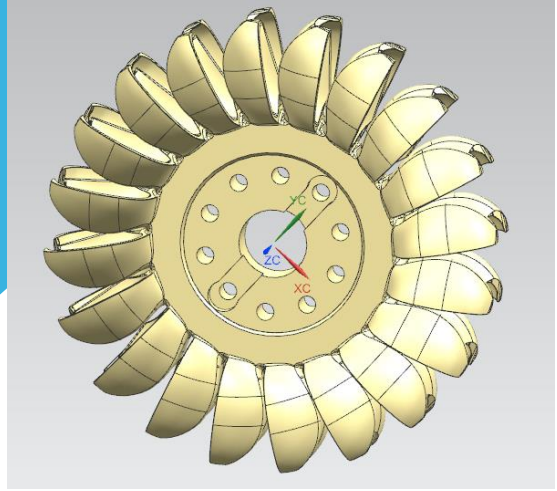


Frame Cad Data

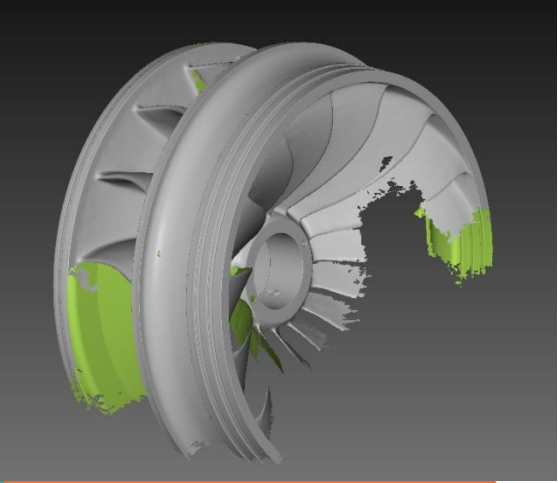
SCANNING & MODELLING CAPABILITIES (HYDRO PROJECTS)



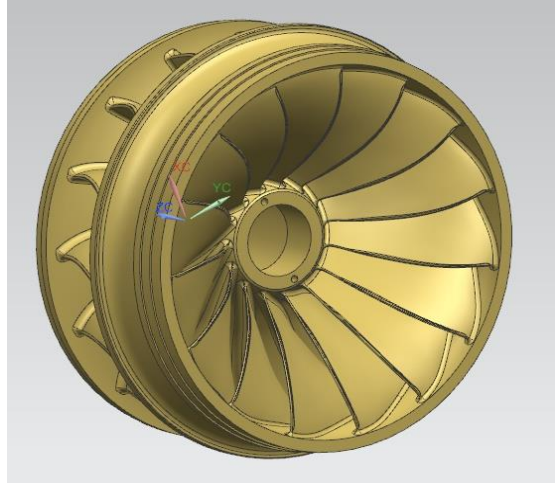
**Pelton Runner
(Scan Data)**



**Pelton Runner
(Cad Data)**



**Francis Runner
(Scan Data)**



**Francis Runner
(Cad Data)**



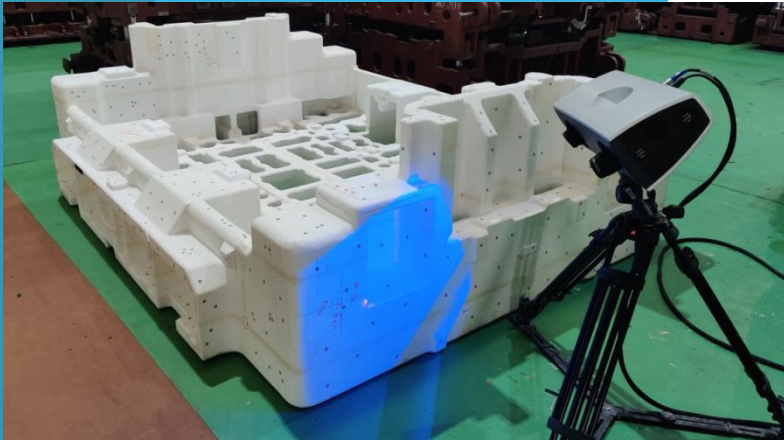
SCANNING & MODELLING CAPABILITIES (SOME MORE MEMORIES)



Runner Blade(Casted)



Water Outlet Cone



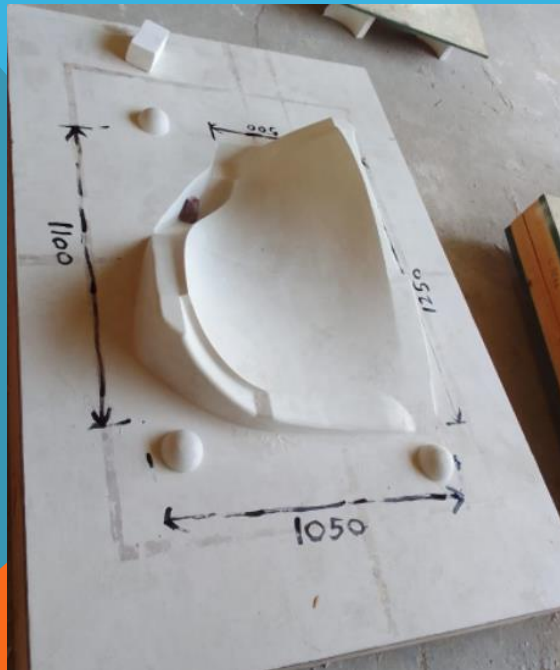
Die Pattern



Boggy Joint

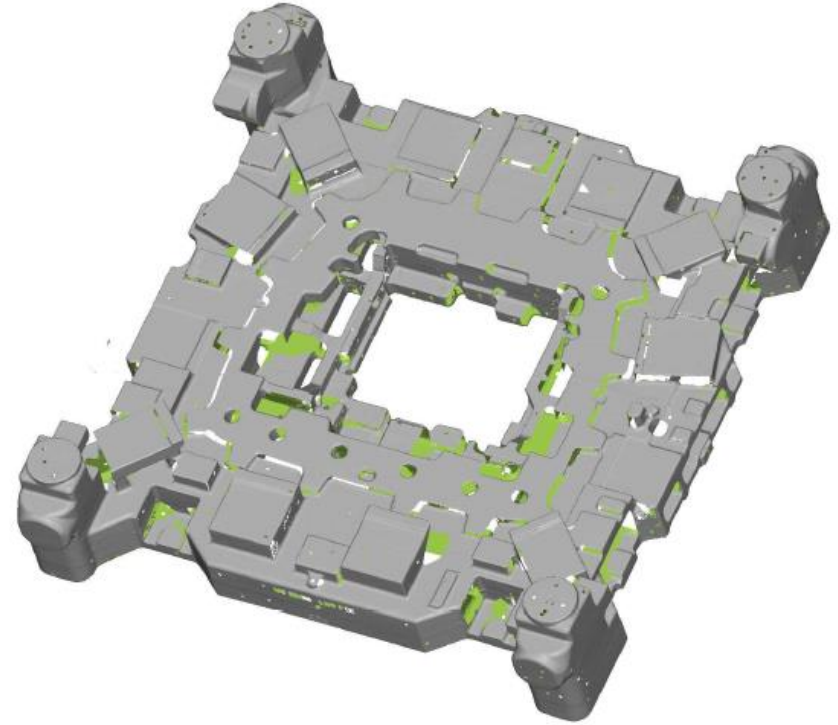
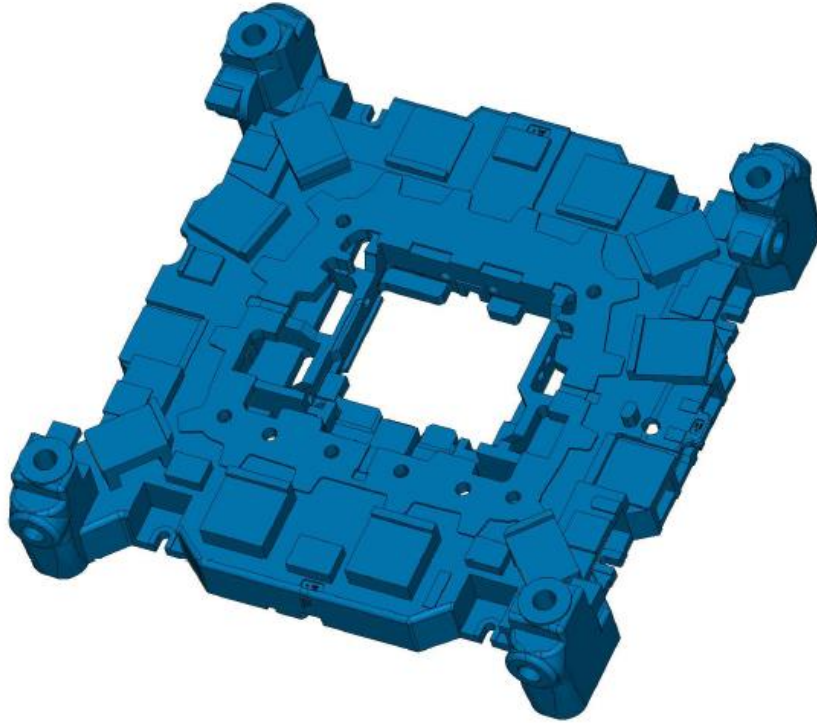


SCANNING & MODELLING CAPABILITIES (SOME MORE MEMORIES)



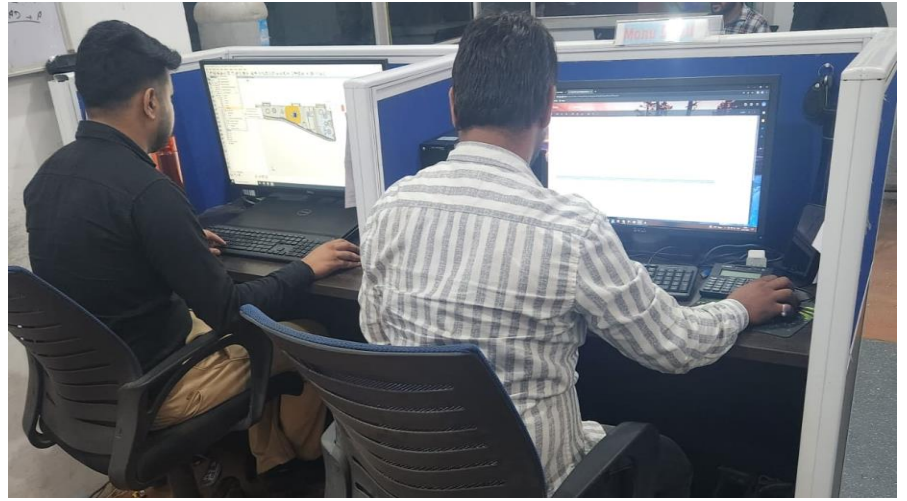


3D INSPECTION (DIE PATTERN)





DESIGN



REVERSE ENGINEERING PROCESS



1.Part To Be Scanned

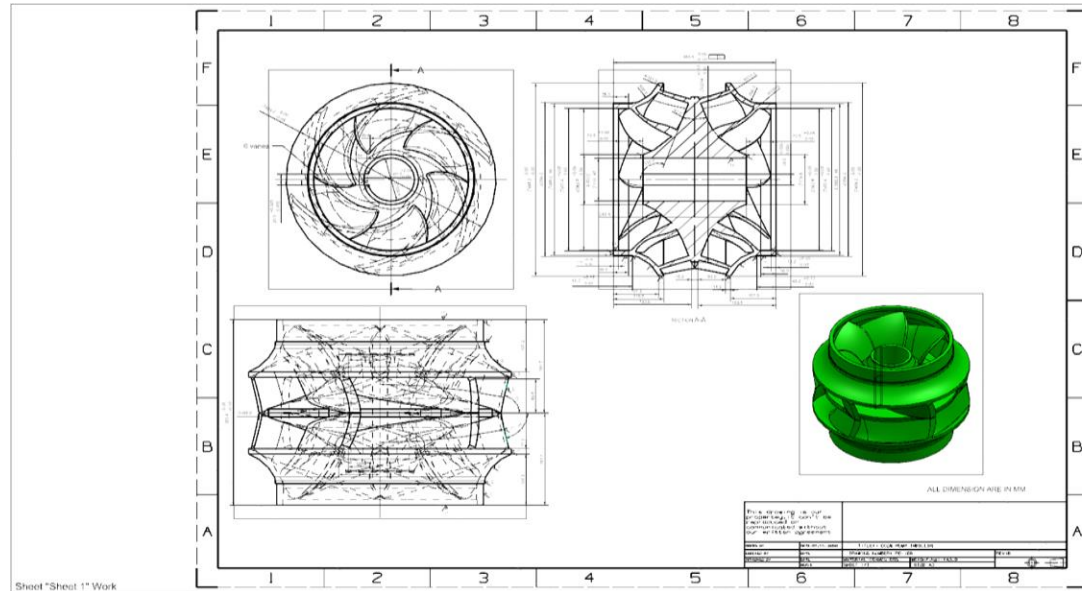


2.Scanned Part

Process :-

1. Part to be scanned .
2. Data after scan.

REVERSE ENGINEERING PROCESS



3. Cad Data After Modeling

4. 2D For Manufacturing

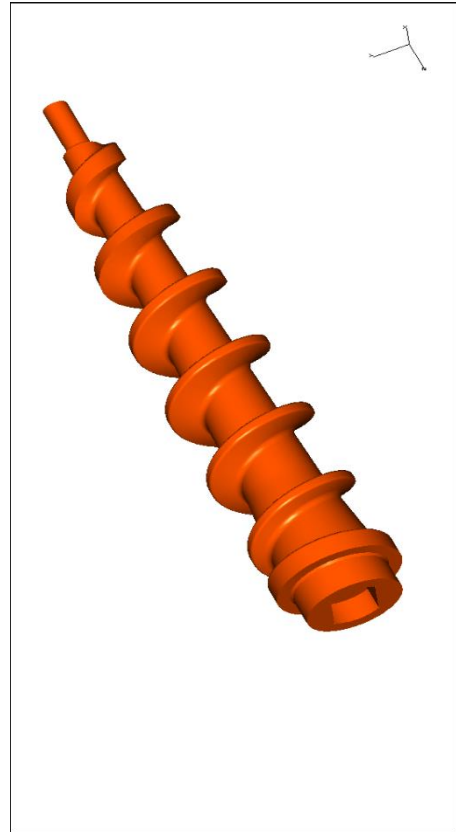
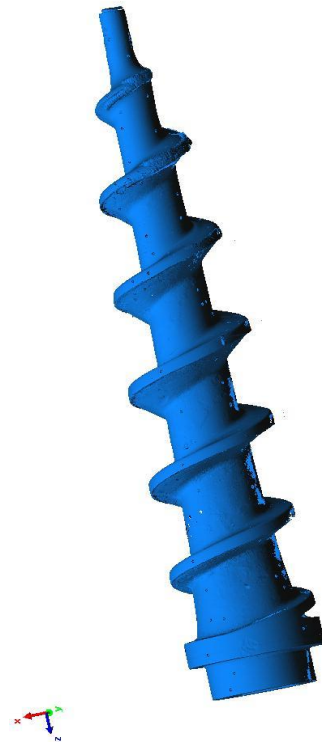
Process :-

3. Cad Data After Modeling

4. 2D For Manufacturing

REVERSE ENGINEERING PROCESS

Mixer



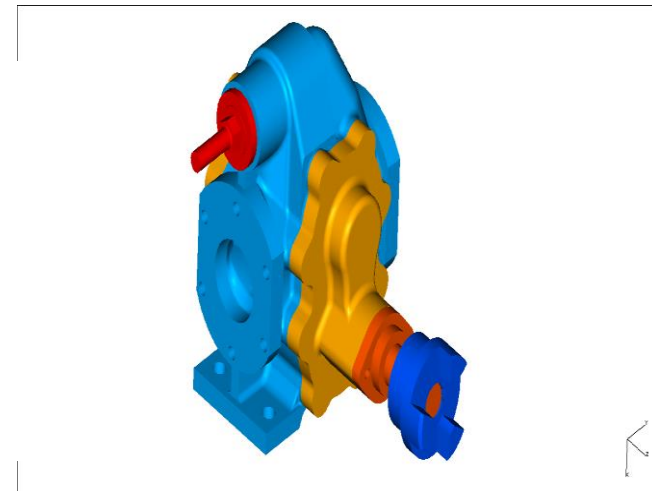
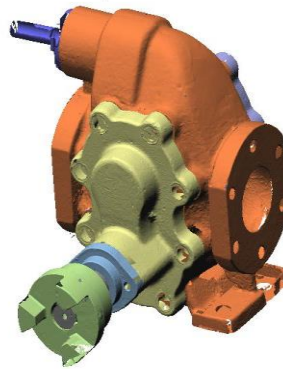
Component

Scanned File

CAD Modelling

REVERSE ENGINEERING PROCESS

Pump Assembly

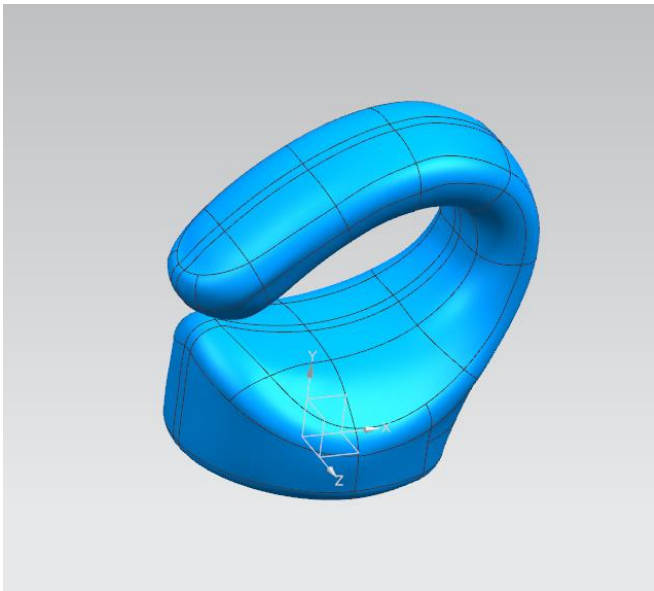


Component

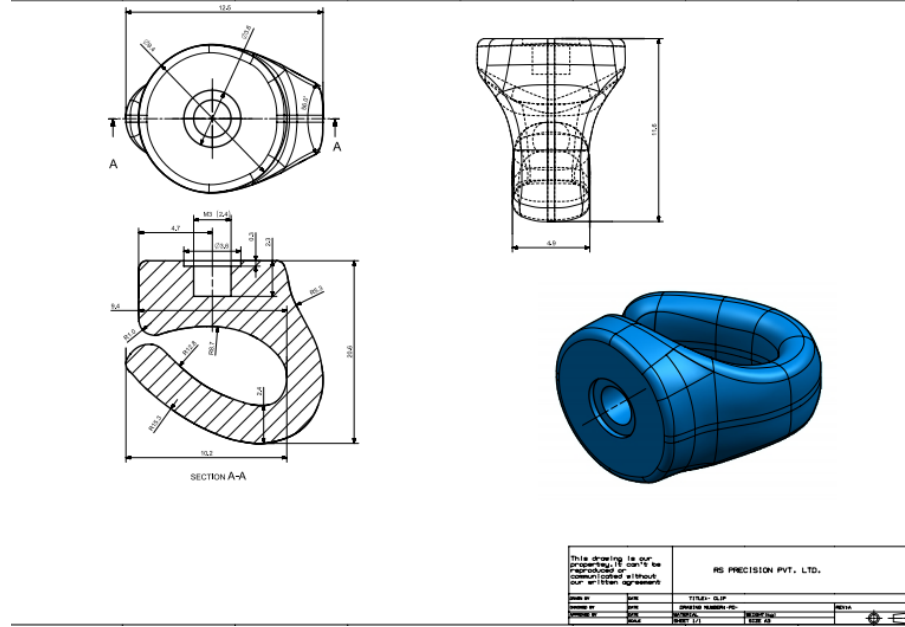
Scanned File

CAD Modelling

REVERSE ENGINEERING PROCESS



Scanned Part



For Manufacturing

Process :-

- 1. Scan The Part.
- 2. Data after scan.
- 3. Cad Data After Modeling
- 4. 2D For Manufacturing

3D PRINTING (PROTOTYPING)



OUR CUSTOMER



DENSO



caparo



HITACHI





THANK YOU

